



**ABERGELDIE**  
COMPLEX INFRASTRUCTURE

Abergeldie Contractors Pty Ltd | ABN: 47 004 533 519  
5 George Young Street, Regents Park NSW 2150 | P: +61 2 8717 7777

## **PITT TOWN BYPASS PROJECT**

**CONTRACT No. 24.0000139285.0411**

**ACI PROJECT No. A234**

# **POLLUTION INCIDENT RESPONSE MANAGEMENT PLAN**

**4 July 2025**

**REVISION No: 0**



**WATER**



**BRIDGES**



**TRANSPORT**



**UNDERGROUND**



**ENERGY**



**REMEDICATION**

## Contents

<b>1.</b>	<b>Document Control .....</b>	<b>3</b>
1.1	PIRMP Sign Off .....	3
1.2	Document Revision Status .....	3
1.3	Distribution (Controlled Copies) .....	4
<b>2.</b>	<b>Abbreviations &amp; Definitions .....</b>	<b>5</b>
<b>3.</b>	<b>Compliance Matrix .....</b>	<b>7</b>
<b>4.</b>	<b>Introduction .....</b>	<b>8</b>
4.1	Context .....	8
4.2	Background and Project Description .....	8
<b>5.</b>	<b>Purpose, EPL and Person/s Responsible Details .....</b>	<b>11</b>
5.1	Purpose .....	11
5.2	EPL Details .....	11
5.3	Persons Responsible During a Pollution Event .....	12
5.4	Notification to Relevant Authorities .....	13
5.5	Notification to Identified Sensitive Premises & Neighbours .....	14
<b>6.</b>	<b>Environmental hazards and risks .....</b>	<b>15</b>
6.1	Pollutant Inventory .....	15
6.2	Safety Equipment & Storage Locations .....	15
6.3	Minimising Harm to Persons on the Premises .....	16
<b>7.</b>	<b>Environmental Incident Management .....</b>	<b>17</b>
7.1	Incident Identification and Classification .....	17
7.2	Incident Response and Notification .....	18
7.3	Incident Investigation and Reporting .....	21
7.4	Environmental Emergency Preparedness .....	22
<b>8.</b>	<b>Review and Improvement .....</b>	<b>24</b>
8.1	Continuous Improvement .....	24
8.2	PIRMP update and amendment .....	24
8.3	PIRMP Availability .....	25
	<b>Appendix A – Premises Maps .....</b>	<b>26</b>
	<b>Appendix B – Site Compound Layout .....</b>	<b>27</b>
	<b>Appendix C – Pollution Extent Mapping .....</b>	<b>28</b>
	<b>Appendix D – Environmental Contacts List .....</b>	<b>29</b>

## Tables

Table 1-1	PIRMP Review and Approval Register .....	3
Table 1-2	PIRMP Revision Register .....	3
Table 1-3	PIRMP Distribution Register .....	4

Table 5-1 EPL Details for Pitt Town Bypass Project .....	11
Table 5-2 Person/s Responsible for Pitt Town Bypass Project .....	12
Table 5-3 Key responsibilities during a pollution event .....	12
Table 5-4 Relevant authorities .....	13
Table 5-5 Identified sensitive receivers for Pitt Town Bypass Project .....	14
Table 6-4 Potential pollutant inventory .....	15
Table 6-5 Safety equipment and storage locations .....	15

## Figures

Figure 1. Project overview and features from Review of Environmental Factors (REF), 2018 .....	9
Figure 2. Project overview and features from Addendum Review of Environmental Factors (AREF), 2024 .....	10

## 1. DOCUMENT CONTROL

### 1.1 PIRMP SIGN OFF

Approval of the Pollution Incident Response Management Plan (PIRMP) is required once the Environmental Protection License (EPL) has been granted for the Project and defined as a “*Licensed Premises*”. This approval must be secured prior to the commencement of construction on-site. A record of the approval (and re-approval of any revisions) will be maintained in Table 1-1.

Table 1-1 PIRMP Review and Approval Register

FUNCTION	POSITION	NAME	SIGNATURE	DATE
Prepared by	Abergeldie Environment Manager	(Redacted)	(Redacted)	04/07/2025
Reviewed by	Abergeldie Environment & Sustainability Manager	(Redacted)	(Redacted)	04/07/2025
Approved by	Abergeldie Senior Project Manager	(Redacted)	(Redacted)	04/07/2025

### 1.2 DOCUMENT REVISION STATUS

Each page of this document bears a document name and revision date. The document is uncontrolled when printed. Any changes within this document that modify either the scope or intent of the original document are highlighted in the right margin by a vertical bar ( | ). When revisions to the document are issued, Table 1-2 will be updated to show the most recent revision level. The revised document will be forwarded to the holders of controlled copies as shown in Table 1-3. Recipients are responsible for destroying or marking “superseded” on the previous revision.

Table 1-2 PIRMP Revision Register

DOC ID #	REVISION #	REVISION DATE	AMENDMENT DESCRIPTION
#	A	25/06/2025	Initial issue to TfNSW for review and comment
#	B	27/06/2025	TfNSW review comments addressed
#	C	03/07/2025	Further TfNSW review comments addressed
#	0	04/07/2025	Issued for Use

Significant amendments to the PIRMP shall be reviewed and re-approved in accordance with Section 7.3.2 of the Project’s Construction Environmental Management Plan (CEMP), Section 153A of the Protection of the Environment Operations Act 1997 (POEO Act) and Chapter 4 of the Protection of the Environment Operations (General) Regulation 2022.

Controlled versions of these documents will be kept on the Project SharePoint page with all previous revisions marked as “*superseded*”.

### 1.3 DISTRIBUTION (CONTROLLED COPIES)

Table 1-3 PIRMP Distribution Register

COPY #	ISSUED TO	COMPANY/POSITION	DATE
1	(Redacted)	TfNSW – Contractor's Authorised Person	04/07/2025

## 2. ABBREVIATIONS & DEFINITIONS

ABBREVIATION	DESCRIPTION
ACI	Abergeldie Contractors Pty Ltd (the Licensee)
AQMP	Air Quality Management Plan
AREF	Addendum Review of Environmental Factors, prepared by TfNSW and Sustain JV (2024)
Authorities	Appropriate and relevant regulatory authority as defined by s148 of the POEO Act such as NSW EPA, Fire & Rescue NSW, SafeWork NSW, Ministry of Health and local councils
BOM	Bureau of Meteorology
CCTV	Closed Circuit Television
CEMP	Construction Environmental Management Plan
CWMP	Construction Waste Management Plan
ESCPS	Erosion and Sediment Control Plans
FMP	Flood Management Plan
General Regulation	Protection of the Environment Operations (General) Regulation 2022
Environmental Aspect	Defined by AS/NZS ISO 14001:2015 as an element of an organisation's activities, products or services that can interact with the environment.
Environmental Impact	Defined by AS/NZS ISO 14001:2015 as any change to the environment, whether adverse or beneficial, wholly or partially resulting from an organisation's environmental aspects.
Environmental Incident	<p>An environmental incident is an occurrence or set of circumstances, where pollution or an adverse impact to the environment has occurred or is likely to occur (near miss), as a consequence. This may include:</p> <ul style="list-style-type: none"> <li>-Pollution to water, air or land</li> <li>- Adverse environmental impacts such as contamination, harm to flora and fauna, and damage to heritage.</li> <li>- Adverse community impacts such as odour, and excessive noise emissions.</li> </ul> <p>An environmental incident is a notifiable environmental incident if it meets the threshold for notification to the appropriate regulatory authority within the appropriate legislation.</p>
Environmental Site Representative	Includes Abergeldie Environment & Sustainability Team members such as Environment Manager, Environmental Advisor, Environmental Coordinator, etc.
EP&A Act	<i>Environmental Planning and Assessment Act 1979</i> (NSW)
EPA	Environmental Protection Authority (NSW)
EPL	Environment Protection Licence (this is EPL 22024 for this Project)
ERMP	Emergency Response Management Plan
EWMS	Environmental Work Method Statement
HRMP	Hazard and Risk Management Plan
HSEQ	Health, Safety, Environment and Quality
IFS	Abergeldie's Incident Management System
IMS	Integrated Management System
ISO14001	International Standard ISO 14001:2015, Environmental Management Systems
LGA	Local Government Authority
Notifiable environmental incident	Environmental incidents that trigger a regulatory obligation to formally notify a relevant authority. Notifiable environmental incidents require immediate formal notification to the relevant authorities and must be managed and reported as per the relevant legislative requirements.
NSW	New South Wales
PIRMP	Pollution Incident Response Management Plan (this Plan)

ABBREVIATION	DESCRIPTION
POEO Act	Protection of the Environment Operations Act 1997 (NSW)
Project, the	Pitt Town Bypass Project
REF	Review of Environmental Factors, prepared by TfNSW and Arcadis (2018)
SDS	Safety Data Sheets
SEP	Site Environmental Plan, a visual representation of the site environmental sensitivities and key environmental management controls to be applied.
SSEmMP	Site Specific Emergency Spill Management Plan
SWMP	Soil and Water Management Plan
TfNSW	Transport for NSW
TOBAN	Total Fire Ban

### 3. COMPLIANCE MATRIX

EPL REQUIREMENT		LOCATION
	All environment protection licence holders (licensees) must prepare, implement and test a PIRMP in accordance with the requirements set out in Part 5.7A of the Protection of the Environment Operations Act 1997 (POEO Act) and Chapter 4 of the Protection of the Environment Operations (General) Regulation 2022 (General Regulation).	This Plan

## 4. INTRODUCTION

### 4.1 CONTEXT

This Pollution Incident Response Management Plan (PIRMP or Plan) outlines the procedures that are in place to minimise the risk of a pollution incident on the Premises known as the Pitt Town Bypass Project (the Project) to be delivered for Transport for NSW (TfNSW).

This PIRMP has been prepared to address the requirements of the Environmental Protection License (EPL) 22024, specifically s153A of the Protection of the Environment Operations Act 1997 (POEO Act) and all applicable guidelines and legislation.

The PIRMP has been developed in accordance with Abergeldie Integrated Management System (IMS), TfNSW PIRMP template and Specification G36 – *Environmental Protection* requirements to ensure clear and effective notification, action and communication procedures are in place so an incident is dealt with safely, and all relevant people and authorities are notified, and kept informed throughout the incident for the Project.

### 4.2 BACKGROUND AND PROJECT DESCRIPTION

The Pitt Town Bypass Project (the Project) is being undertaken by Abergeldie for TfNSW. TfNSW proposes to realign the road corridor so through traffic does not travel through the town centre (Figure 1). The Project is located in Pitt Town which is within the Hawkesbury Local Government Area (LGA). The Project would include the following key elements:

- Extending Pitt Town Road past Bathurst Street onto Cattai Road, east of Eldon Street;
- Installing a new two-lane roundabout at Eldon Street and Old Pitt Town Road;
- Closing a portion of Cattai Road to maintain access to Buckingham Street;
- Constructing a new bridge over Hortons Creek;
- Constructing a new 5 cell, 3600 x 1800 precast concrete box culvert structure;
- Installing a new two-lane roundabout at Pitt Town Road/Bathurst Street and Glebe Road.
- Changes to the centre median at the Pitt Town Bypass intersection to allow right turns from Buckingham Street onto Pitt Town Bypass while still restricting the right turn movement from Pitt Town Bypass onto Buckingham Street.
- Changes to property driveway and maintenance accesses by adjusting the alignment and turnaround areas to accommodate maintenance and emergency vehicles.
- Installation of additional road safety barriers and fences along the Pitt Town Bypass and side streets and the removal of two previously proposed retaining walls at the northern roundabout and Buckingham Street.
- Utility adjustments to accommodate the road design with the approved project boundary.
- Installation of a new Closed Circuit Television (CCTV) camera in the vicinity of the southern roundabout, located at the intersection of Pitt Town Road/Bathurst Street and Glebe Road.

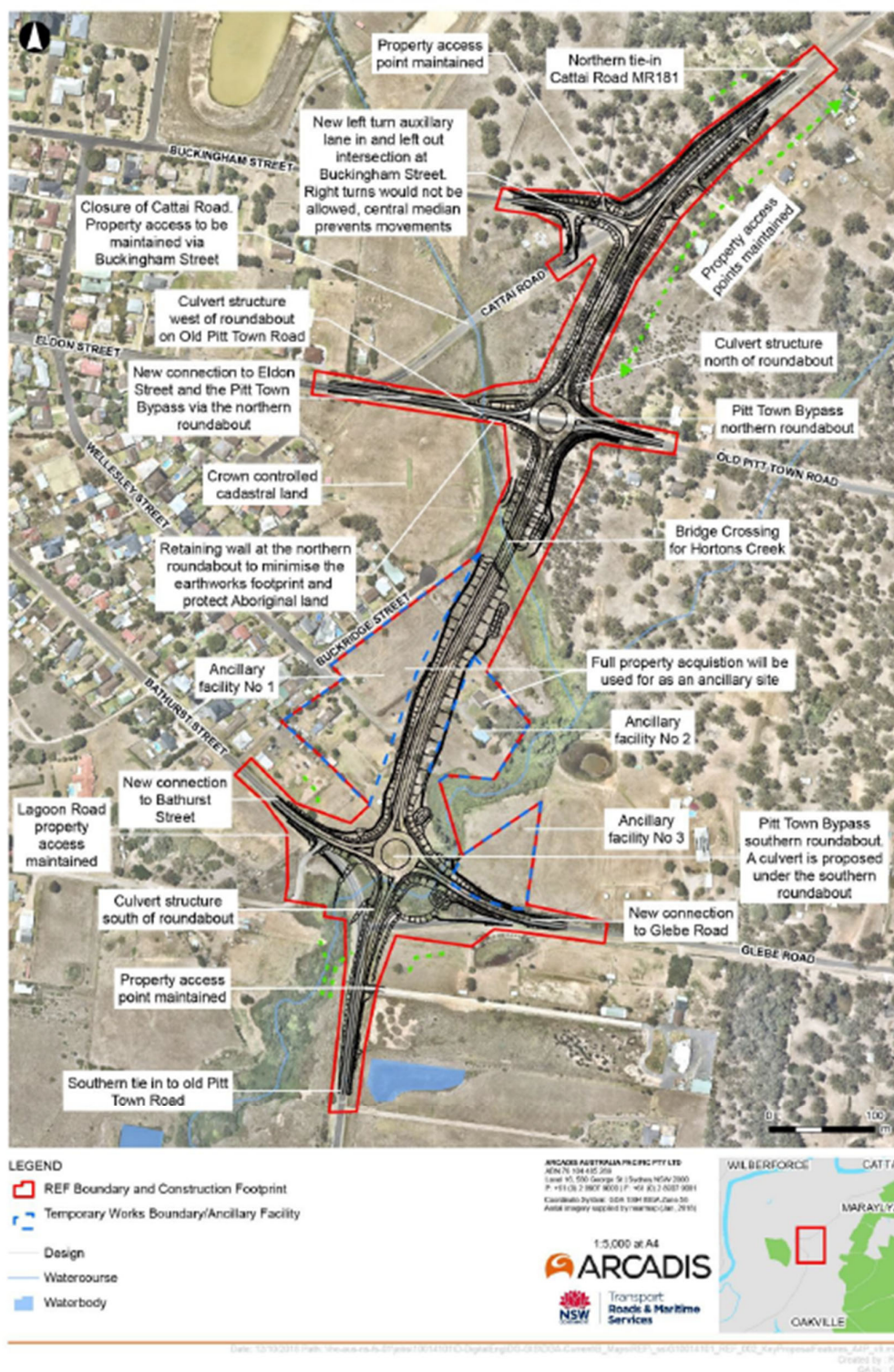


Figure 1. Project overview and features from Review of Environmental Factors (REF), 2018

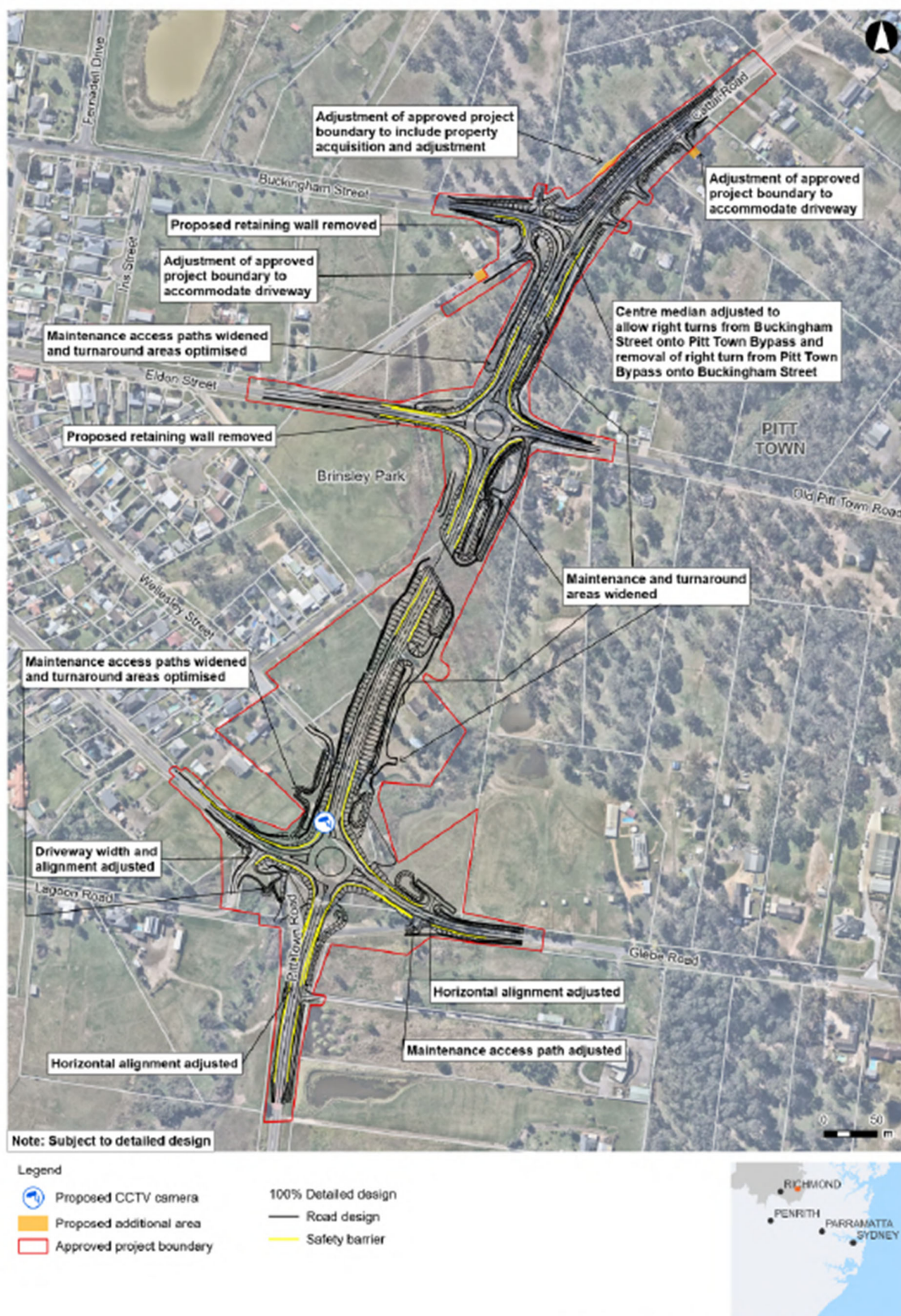


Figure 2. Project overview and features from Addendum Review of Environmental Factors (AREF), 2024

## 5. PURPOSE, EPL AND PERSON/S RESPONSIBLE DETAILS

### 5.1 PURPOSE

Abergeldie Contractors Pty Ltd holds EPL 22024 for the Pitt Town Bypass Project (the Project) issued by the NSW Environment Protection Authority (EPA) under the Protection of the Environment Operations Act 1997 No 156 (POEO Act).

As per the Protection of the Environment Operations Act 1997 (the POEO Act), the holder of an Environment Protection Licence must prepare, keep, test and implement a pollution incident response management plan (PIRMP) that complies with Part 5.7A of the POEO Act in relation to the activity to which the licence relates.

If a pollution incident occurs in the course of an activity so that material harm to the environment (within the meaning of section 147 of the POEO Act) is caused or threatened, the person carrying out the activity must immediately implement this plan in relation to the activity required by Part 5.7A of the POEO Act.

A copy of this plan must be kept at the licensed premises and be made available on request by an authorised EPA officer and to any person who is responsible for implementing this plan.

Parts of the plan must also be available either on a publicly accessible website, or if there is no such website, by providing a copy of the plan to any person who makes a written request. The sections of the plan that are required to be publicly available are set out in Section 74 of the *Protection of the Environment Operations (General) Regulation 2022*.

Note: This plan must be developed in accordance with the **Protection of the Environment Operations Act 1997** (POEO Act) and the **Protection of the Environment Operations (General) Regulation 2022**.

Reference has also been made to the EPA's *Guideline: Pollution Incident Response Management Plans* during the development of this Plan.

*Activation of this PIRMP is only required for those incidents that result in material harm to the environment. Material harm includes actual or potential harm to the health or safety of human beings or to ecosystems, that is not trivial or that results in actual potential loss or property damage of an amount over \$10,000.*

### 5.2 EPL DETAILS

An EPL for the Pitt Town Bypass Project (the Project) has been issued by the NSW EPA under the Protection of the Environment Operations Act 1997 (POEO Act). Details of this are summarised in Table 5-1.

Table 5-1 EPL Details for Pitt Town Bypass Project

REQUIREMENT	DETAILED RESPONSE
<b>Name of Licensee: (including ABN)</b>	Abergeldie Contractors Pty Ltd 47 004 533 519
<b>EPL Number:</b>	22024
<b>Premises name and address:</b>	Pitt Town Bypass Project Pitt Town Bypass between Cattai Road and Pitt Town Road
<b>Company or business contact details</b>	<b>Name:</b> <b>Position or title:</b> General Manager – Health, Safety, Environment & Sustainability <b>Business hours contact number/s:</b> (02) 8717 7777 <b>After hours contact number/s:</b> <b>Email:</b>
<b>Website Address:</b>	<a href="https://abergeldie.com/projects/pitt-town-bypass">https://abergeldie.com/projects/pitt-town-bypass</a>

<b>Scheduled activity/activities on EPL:</b>	Road Construction
<b>Fee-based activity/activities on EPL:</b>	Road construction (>=50,000T & road to be constructed <10km) 50000-100000 Remaining extraction or processing

### 5.3 PERSONS RESPONSIBLE DURING A POLLUTION EVENT

During a pollution event, nominated person/s will be responsible for activating this Plan, notifying relevant authorities and managing a response to the event. Details of each of these person/s responsible are summarised in Table 5-2.

Table 5-2 Person/s Responsible for Pitt Town Bypass Project

REQUIRED ROLE	DETAILED CONTACT DETAILS
<b>PIRMP Activation:</b>	<b>Name of person responsible:</b> <b>Position or title:</b> Senior Project Manager <b>Business hours contact number/s:</b> (02) 8717 7777 <b>After hours contact number/s:</b> <b>Email:</b>
<b>Notifying relevant authorities:</b>	<b>Name of person responsible:</b> <b>Position or title:</b> Environment & Sustainability Manager <b>Business hours contact number/s:</b> (02) 8717 7777 <b>After hours contact number/s:</b> <b>Email:</b>
<b>Managing response to pollution incident</b>	<b>Name of person responsible:</b> <b>Position or title:</b> Senior Environmental Advisor <b>Business hours contact number/s:</b> (02) 8717 7777 <b>After hours contact number/s:</b> <b>Email:</b>

The contact details of these Person/s Responsible are also included in Appendix A of the Construction Environmental Management Plan for the Project.

The key responsibilities for each of the roles detailed in Table 5-2 are further outlined in Table 5-4

Table 5-3 Key responsibilities during a pollution event

ROLE	RESPONSIBLE PERSON	ACTIONS REQUIRED
<b>PIRMP Activation</b>	Senior Project Manager	<ul style="list-style-type: none"> <li><b>IMMEDIATELY</b> implement this PIRMP when notified that a Pollution Incident has occurred onsite.  <b>NOTE: Activation of this PIRMP is only required for those incidents that result in material harm to the environment. Material harm includes actual or potential harm to the health or safety of human beings or to ecosystems, that is not trivial or that results in actual potential loss or property damage of an amount over \$10,000</b></li> <li>Provide adequate resources for the implementation of this PIRMP.</li> <li>Ensure current version of this PIRMP is available on the premises (in a readily accessible location).</li> <li>Ensure current version of this PIRMP is displayed on the website.</li> <li>Ensure this PIRMP and contact details are kept up to date.</li> <li>Ensure that sub-contractors and utilities on site have copies of the plan.</li> </ul>
<b>Notifying relevant authorities</b>	Environment & Sustainability Manager	<ul style="list-style-type: none"> <li>Notify relevant authorities in the correct notification order as per Section 5.4.</li> </ul>

		Note: notification should be made by a person with an appropriate level of authority within the company.
<b>Managing response to pollution incident</b>	Senior Environmental Advisor	<ul style="list-style-type: none"> <li>Ensure that all employees and contractors are given adequate training in identifying and responding to Pollution Incidents and ensure they are aware of the penalties for failing to comply.</li> <li>Annually test this PIRMP.</li> <li>In consultation with TfNSW Authorised Delegate, provide written Pollution Incident report to NSW EPA within seven (7) days on an incident occurring.</li> <li>Ensure that all persons working on site have been inducted in the requirements of this plan and procedures</li> </ul>
<b>Environmental Site Representative (ESR)</b>	Environmental Site Representative	<ul style="list-style-type: none"> <li>Ensure that works areas have spill kits available.</li> <li>Monitor that works activities are being undertaken in accordance with the pre-emptive measures in this plan.</li> <li>Undertake weekly inspections to assess storage facilities and safety and pollution control equipment</li> </ul>

## 5.4 NOTIFICATION TO RELEVANT AUTHORITIES

During a pollution event, the nominated person/s responsible will notify Authorities in accordance this Plan. These notifications will be undertaken following approval of the TfNSW Authorised Delegate for the Project.

Persons or authorities required to be notified as per Part 5.7A of the POEO Act in the case of a pollution incident that causes or threatens to cause material harm to the environment.

Relevant authorities include:

1. Fire and Rescue NSW and/or Rural Fire Service as applicable – 000 (first notification)
2. EPA – 131 555
3. NSW Health – Hawkesbury Public Health Unit. See local contact details online at [www.health.nsw.gov.au/Infectious/Pages/phus.aspx](http://www.health.nsw.gov.au/Infectious/Pages/phus.aspx).
4. SafeWork NSW – 131 050
5. Local council – Hawkesbury City Council; in which the pollution has occurred.

Note: The local council and public health unit will vary depending on the location of the pollution incident.

Details of each of these relevant authorities are outlined in Appendix A of the CEMP for the Project and are summarised in Table 5-4 of this Plan.

Table 5-4 Relevant authorities

REQUIREMENT	DETAILED RESPONSE	
<b>Fire and Rescue NSW / Rural Fire Service</b>	<b>Contact number/s:</b>	Telephone 000 (emergencies) OR 1300 729 579 (non-emergencies).
<b>EPA</b>	<b>Contact number/s:</b>	Telephone 131 555
<b>NSW Health</b>	<b>Relevant Area Health Service: Contact number/s:</b>	Hawkesbury Public Health Unit Telephone 1300 066 055 or (02) 4587-0714
<b>SafeWork NSW</b>	<b>Contact number/s:</b>	Telephone 131 050
<b>Local authority/s / Council</b>	<b>Relevant Local Council: Contact number/s:</b>	Hawkesbury City Council Telephone (02) 4560 4444

## 5.5 NOTIFICATION TO IDENTIFIED SENSITIVE PREMISES & NEIGHBOURS

During a pollution event, the nominated person/s responsible will notify any identified sensitive premises and neighbours where imminent or potential impact is predicted, in accordance this Plan. These notifications will be undertaken following approval of the TfNSW Authorised Delegate for the Project. A list of identified sensitive premises and neighbours is provided in Table 5-5.

Table 5-5 Identified sensitive receivers for Pitt Town Bypass Project

IDENTIFIED SENSITIVE RECEIVER	DETAILED RESPONSE	
8 Cattai Road, Pitt Town	Contact number/s:	Contact details are available via Consultation Manager – contact Community Stakeholder & Engagement Manager for further details
9 Cattai Road, Pitt Town	Contact number/s:	
29 Cattai Road, Pitt Town	Contact number/s:	
30 Cattai Road, Pitt Town	Contact number/s:	
30A Cattai Road, Pitt Town	Contact number/s:	
32 Cattai Road, Pitt Town	Contact number/s:	
38 Cattai Road, Pitt Town	Contact number/s:	
46 Cattai Road, Pitt Town	Contact number/s:	
61 Buckingham Street, Pitt Town	Contact number/s:	
61A Buckingham Street, Pitt Town	Contact number/s:	
21 Bathurst Street, Pitt Town	Contact number/s:	
22 Bathurst Street, Pitt Town	Contact number/s:	
58 Glebe Road, Pitt Town	Contact number/s:	
402 Pitt Town Road, Pitt Town	Contact number/s:	
408 Pitt Town Road, Pitt Town	Contact number/s:	
397 Pitt Town Road, Pitt Town	Contact number/s:	
22 Old Pitt Town Road, Pitt Town	Contact number/s:	
Pitt Town Public School	Contact number/s:	(02) 4572 3126
Milestones Early Learning Childcare Centre, Pitt Town	Contact number/s:	(02) 4572 3013
Papilo Early Learning – Pitt Town	Contact number/s:	(02) 4580 7064
Pitt Town Anglican Church	Contact number/s:	(02) 4572 3262
Pitt Town Uniting Church	Contact number/s:	0438 367 773
Kingdom Hall of Jehovah's Witness – McGraths Hill	Contact number/s:	(02) 4577 6742
Pitt Town District Sports Club	Contact number/s:	(02) 4572 3658
Lynwood Golf & Country Club	Contact number/s:	(02) 4580 2800

## 6. ENVIRONMENTAL HAZARDS AND RISKS

### 6.1 POLLUTANT INVENTORY

Potential pollutants will be kept on the premises and used in carrying out activities at the premises. Potential pollutants can include, but are not limited to, fuels and lubricants used for equipment or machinery, gas cylinders, waste materials or wastewater, effluents and sediment-contaminated stormwater. The primary hazardous materials and chemicals (including fuels) used and stored on site and the maximum quantity to be stored on site are listed in Table 6-1.

Potential pollutants would be stored within the main site compound area at **42 Wellesley Street, Pitt Town** when not in use. Safety equipment and material safety data sheets would also be located within the main site compound area also. A map of this area is included in Appendix A of this plan.

Table 6-1 Potential pollutant inventory

POTENTIAL POLLUTANT	MAXIMUM QUANTITY STORED ON-SITE	STORAGE LOCATION
Diesel fuel	200L	42 Wellesley Street, Pitt Town Main Compound / Bunded storage containment.
Unleaded fuel	50L	42 Wellesley Street, Pitt Town Main Compound / Bunded storage containment.
Oxygen (cylinders)	6 (each)	42 Wellesley Street, Pitt Town Main Compound / Designated storage cages
Acetylene (cylinders)	6 (each)	42 Wellesley Street, Pitt Town Main Compound / Designated storage cages
LPG (cylinders)	2 (each)	42 Wellesley Street, Pitt Town Main Compound / Designated storage cages

### 6.2 SAFETY EQUIPMENT & STORAGE LOCATIONS

A summary of the safety equipment to be kept on site and location of storage on the premises is presented in Table 6-2.

Table 6-2 Safety equipment and storage locations

SAFETY EQUIPMENT	STORAGE LOCATION
Fire extinguishers	42 Wellesley Street, Pitt Town - main compound / storage containers All ACI site vehicles and major plant/machinery
Spill kits (general)	42 Wellesley Street, Pitt Town - main compound / bunded storage containers All key work fronts once open – see Site Environmental Plan for locations
Spill kits (chemical)	42 Wellesley Street, Pitt Town - main compound / bunded storage containers
Spill kits (marine)	Key work front adjacent to waterways – see Site Environmental Plan for locations

First aid kits	42 Wellesley Street, Pitt Town - main compound / first aid room All vehicles and plant
Safety data sheets and chemical risk assessments	42 Wellesley Street, Pitt Town - main compound / bunded storage containers
Hard hats for designated "emergency controllers"	42 Wellesley Street, Pitt Town - main Compound / Site Offices
Eye wash stations	42 Wellesley Street, Pitt Town - main compound / first aid room
Buoyancy aids or Personal Flotation Devices (PFDs)	Key work front adjacent to waterways
12,000L water cart	Mobile site vehicle operating across site, however will be parked predominately in 42 Wellesley Street, Pitt Town - main compound

### 6.3 MINIMISING HARM TO PERSONS ON THE PREMISES

An Emergency Response Management Plan (ERMP) has been developed for the work and would be implemented throughout the Project. The plan includes to assist site personnel to adequately respond to a potential emergency situation. It details specific responsibilities and processes to be implemented in the event of an emergency event that could pose a threat to life, health, property or the general environment and can be accessed via the Project's SharePoint system.

A hard copy of the ERMP will be available at the site office and will be provided to all personnel responsible for implementing the ERMP. The plan is to be provided to all sub-contractors and utilities on site.

## 7. ENVIRONMENTAL INCIDENT MANAGEMENT

An environmental incident is an occurrence or set of circumstances, that causes or threatens to cause material harm from pollution (air, water, noise, or land) or other adverse environmental impact and may or may not be or cause a non-conformance with the project environmental planning approval.

Environmental incidents will be classified, notified, managed, investigated and reported in accordance with Abergeldie IMS Procedure, *WHS010 Incident Management* and the incident management processes outlined in this Plan. Abergeldie will implement the Site-specific Emergency Spill Plan (SSEmSP). In addition to internal incident response procedures, Abergeldie will implement TfNSW's *EMF-13-PR-0001 Environmental Incident Procedure* (TfNSW 2023).

### 7.1 INCIDENT IDENTIFICATION AND CLASSIFICATION

An environmental incident may include (but not be limited to) the following:

- Material harm to the environment (potential and actual) pollution incidents.
- Pollution to land or water from a spillage or leak of a substance.
- Unauthorised damage, removal or harm to native flora and fauna (including threatened species).
- Unauthorised damage, removal or harm to heritage objects, items or places.
- Noise, dust or odour issue that has an impact on people or the environment or has resulted in a complaint from a regulator or community member.
- Potential or actual legal, contractual or compliance breach.
- Unexpected finds of contamination, hazardous building materials, protected flora or fauna or heritage.

Material harm to the environment is defined by Section 147 of the *NSW Protection of the Environment Operations Act 1997* (POEO Act) as follows:

#### s147 Meaning of material harm to the environment

(1) *For the purposes of this Part*

(a) *harm to the environment is material if*

- (i) *it involves actual or potential harm to the health or safety of human beings or to ecosystems that is not trivial, or*
  - (ii) *it results in actual or potential loss or property damage of an amount, or amounts in aggregate, exceeding \$10,000 (or such other amount as is prescribed by the regulations), and*
- (b) *loss includes the reasonable costs and expenses that would be incurred in taking all reasonable and practicable measures to prevent, mitigate or make good harm to the environment.*

(2) *For the purposes of this Part, it does not matter that harm to the environment is caused only in the premises where the pollution incident occurs.*

Environmental incidents will be classified in accordance with the Abergeldie IMS Procedure, *WHS010 Incident Management*, the Project's CEMP, and the TfNSW *EMF-13-PR-0001 Environmental Incident Procedure* (TfNSW 2023). The Environmental Site Representative, in consultation with the Project Manager, is responsible for classifying the incident.

## 7.2 INCIDENT RESPONSE AND NOTIFICATION

### Response and internal notification

The notification of an environmental incident is the responsibility of all site and contractor personnel. The general procedure for incident response in accordance with *WHS010 Incident Management* will involve:

- Stop works, make safe and stop further impact.
- Immediately notify the Abergeldie Site Supervisor.
- Quantify risk level and notification requirements.
- Notify stakeholders (as required), including internal, TfNSW and Regulatory Authorities.
- Agree on required actions, decide on appropriate level of investigation and assign actions.
- Implement corrective actions and monitor for effectiveness.
- Complete investigation and ensure all data is captured in IFS and TfNSW's MyNGARA system as required.

### Internal notifications

Abergeldie Site Supervisor, or other person who is aware of the incident, will immediately notify the Abergeldie Project Manager, who will then notify the Abergeldie Environmental Site Representative, Abergeldie Construction Manager and TfNSW Project Manager and TfNSW Environmental Representative. General Managers will be notified for severe environmental incidents in line with IMS Procedure, *WHS010 Incident Management*.

- All incidents shall be reported in Abergeldie's IFS and TfNSW's MyNGARA systems.
- TfNSW shall be formally notified of incidents and the TfNSW EMF-13-PR-0001 *Environmental Incident Procedure* (TfNSW 2023) shall be followed.

### External notification of material harm pollution incidents

This plan should be implemented, and relevant authorities notified (see Section 6), if there is a pollution incident that poses a risk of '*material harm to the environment*', which is defined in Section 147 of the POEO Act as"

- I. It involves actual or potential harm to the health or safety of human beings or to ecosystems that is not trivial, or
- II. It results in actual or potential loss or property damage of an amount, or amounts in aggregate, exceeding \$10,000 (or such amount as is prescribed by the regulations), and
- III. Loss includes the reasonable costs and expenses that would be incurred in taking all reasonable and practicable measures to prevent, mitigate or make good harm to the environment.

Material harm pollution incidents must also be managed in accordance with this Plan and the following response protocol:

- Worker becomes aware of a possible material harm pollution incident
- Immediately contact PIRMP Activator – Senior Project Manager (see Table 5-2)
- If there is immediate threat to human health or property the Notifier of Relevant Authorities' – Environment & Sustainability Manager (see Table 5-2) would immediately contact emergency services and persons who may be in danger.
- PIRMP Activator – Senior Project Manager (see Table 5-2) (or worker if site manager/s not available) then immediately contacts the General Manager – Health, Safety, Environment & Sustainability or the Environmental Site Representative (see Table 5-2) to confirm that the incident should be considered material harm.
- If the incident is considered material harm, Notifier of Relevant Authorities' name – Environment & Sustainability Manager (see Table 5-2) or General Manager – Health, Safety, Environment & Sustainability immediately contacts all the appropriate authorities listed in Table 5-4. Note that:
  - i. Where there is doubt about whether an incident should be considered material harm, or the relevance of a particular authority, all authorities should be notified.
  - ii. Where all information is not yet available, notification should take place immediately (to meet legislative requirements), and further information should be provided once available.

Under Section 148 of the POEO Act, environmental incidents causing or threatening material harm to the environment must be reported to the following appropriate regulatory authorities:

- NSW EPA - environment line – telephone 131 555.
- Hawkesbury City Council – telephone 02 4560 4444.
- The Ministry of Health (via the local Public Health Unit) – Hawkesbury Public Health Unit – telephone 1300 066 055 or (02) 4587-0714.
- SafeWork NSW – telephone 131 050.
- Fire and Rescue NSW – telephone 000 (emergencies) OR 1300 729 579 (non-emergencies).

If material harm pollution incidents present an immediate threat to human health or property, the order of notification is to focus on first responders being **Fire and Rescue NSW (telephone 000), then NSW EPA, Ministry of Health, SafeWork NSW and the Local Council** (i.e. Hawkesbury City Council).

If material harm pollution event does not present an immediate threat to human health or property, the order of notification should be **NSW EPA, then Local Council** (i.e. Hawkesbury City Council), **Ministry of Health, SafeWork NSW and the Fire and Rescue NSW** (telephone 000).

The Abergeldie Environmental Site Representative, the Abergeldie Environment & Sustainability Manager and TfNSW Authorised Delegate must be consulted regarding notification to regulatory authorities.

The following information is required to be reported, in accordance with Section 150 of the POEO Act:

- The time, date, nature, duration and location of the incident.

- The location of the place where pollution is occurring or is likely to occur, the nature, the estimated quantity or volume and the concentration of any pollutants involved if known.
- The circumstance in which the incident occurred (including the cause of the incident, if known).
- The action taken or proposed to be taken to deal with the incident and any resulting pollution or threatened pollution, if known.

If further information becomes known after the initial notification, that information must immediately be notified to all authorities in accordance with Section 150 of the POEO Act. The verbal notification must be followed by written notification within seven (7) days of the date on which the incident occurred. The written notification must include the details as outlined above for verbal notification.

In accordance with Condition R2.1 of the EPL, notifications must be made by telephoning the Environment Line service on 131 555. Note: The licensee or its employees must notify all relevant authorities of incidents causing or threatening material harm to the environment immediately after the person becomes aware of the incident in accordance with the requirements of Part 5.7 of the Act. In accordance with Condition R2.2 of the EPL, the licensee must provide written details of the notification to the EPA within seven (7) days of the date on which they became aware of the incident

### Other regulatory agency notification requirements

Other statutory notifications requirements may arise from environmental incidents such as unexpected finds of Aboriginal objects and remains or non-Aboriginal relics, pollution incidents in water supply catchment areas, inextinguishable fires during a bushfire danger period, or some occurrences of land contamination. All incidents must be notified to the Environmental Site Representative who will provide guidance on the statutory notification requirements relevant to the issue, as well as the timeframes for reporting.

### Neighbours and other local community notification requirements

The site is located within the Hawkesbury LGA. The site is located within the catchment area of the Cattai Creek and the Hawkesbury River. The project is located within Pitt Town with neighbours and a community directly adjacent to the works. Large scale pollution incidents could potentially impact the Pitt Town community and downstream receivers of Cattai Creek.

Any pollution incident causing or threatening material harm to the environment in these areas will be communicated to all people likely to be adversely affected by the incident.

Communication with these people will be made as soon as practicable following a pollution incident as well as on an ongoing basis until the incident has been fully controlled and any harm caused by the incident has been rectified.

Abergeldie will work with TfNSW to contact people affected by a pollution incident either by telephone, letterbox drop or 'doorknocking'. Notifications will also be made, if deemed necessary, on the Project website. The method and content of any communication will depend on the pollution incident and the actions required to protect human health. For example, advice may be given to avoid the use of water in creeks affected by the discharge of a pollutant to a waterway.

### 7.3 INCIDENT INVESTIGATION AND REPORTING

Environmental incidents, including complaints, must be recorded in the IFS Incident Management System within 24 hours and meet TfNSW incident reporting requirements as well as NSW EPA requirements as detailed in EPL 22024 Conditions R2 and R3. All incidents will be closed out as quickly as possible and all required actions will be taken to resolve environmental incidents.

Information included in reporting must be factual and accurate. For initial 24-hour email notification, the following information must be provided:

- Date of event
- Project / site name
- Type of event that has occurred (i.e. environmental incident, incident and non-compliance, non-compliance, report only or regulatory action)
- Description of the event
- Quantity / volume
- Immediate response actions that were implemented
- Notification/s undertaken.

In the case that regulatory action is received relating to a previously reported environmental incident, non-compliance or report-only event, reference to the relevant event must be made in the report for the regulatory action.

All environmental incidents will be investigated to the level required to address the incident classification in accordance with IMS Procedure *WHS010 Incident Management* and recorded in accordance with the TfNSW EMF-13-PR-0001 *Environmental Incident Procedure* (TfNSW 2023). An environmental investigation may include the following basic elements depending on the size and severity of the incident:

- Identifying the cause, extent and responsibility of the incident.
- Identifying if it's a reportable incident to a regulator.
- Identifying and implementing the necessary corrective action.
- Identifying the personnel responsible for carrying out the corrective action.
- Implementing or modifying controls necessary to avoid a repeat occurrence of the incident.
- Recording any changes in written procedures required.
- Advising the relevant stakeholders, if any substantial pollution has occurred (reporting of incidents to regulatory authorities).

The Project Manager must ensure all incidents are documented in IFS to allow incident actions to be monitored implemented within the specified timeframes.

Upon the completion of the investigation, the findings and recommendations must be distributed to the relevant work groups for discussion at a toolbox meeting. All incidents and the results of the subsequent investigation will be tabled and reviewed at the next project management review meeting.

All employees and subcontractors are required to report environmental incidents, non-conformances and near misses to their Supervisor and assist in completion of incident investigations and reporting as directed or required. Subcontractors may be required to prepare an incident report in accordance with their company procedures.

### Written incident reporting requirements to the EPA

In accordance with EPL 22024 Condition R2.2, within seven (7) days from the date on which the incident occurred, a detailed report must be submitted to the EPA including the following information:

- The date, time and nature of the incident
- Identify the cause (or likely cause) of the incident
- What action has been taken to date
- The proposed measures to address the incident

If any of the information was not known at the time of initial reporting of the Pollution Incident to any of the authorities, that information should be notified to the Authorities immediately after it becomes known.

All communications with any of the Authorities following the incident are to be made in consultation with TfNSW Project Manager and Environment Manager. Following the initial notification of the incident, these personnel will ensure that regular contact is made with all Authorities, and persons who have been notified of the incident, in relation to ongoing actions taken to combat the pollution caused by the incident.

In particular, Abergeldie Environment & Sustainability Manager and the Environmental Site Representative will be responsible for;

- Liaison with the EPA regarding appropriate actions to be taken to control, manage and mitigate the pollution.
- Working co-operatively with the EPA and any other relevant authorities to clean-up any pollution.
- Notifying the community of the results of ongoing monitoring of the pollution.
- Consulting any owners or occupiers in the vicinity of the site regarding any off-site actions to be taken which may impact on their properties.

## 7.4 ENVIRONMENTAL EMERGENCY PREPAREDNESS

The key to effective prevention of environmental incidents/non-compliances is monitoring, surveillance and training. During construction activities, inspections and preventative actions will include:

- Regular inspections of construction areas and the surrounding environment;
- Identification of potential and actual environmental issues / non-compliances; and
- On-going environmental training.

The following documentation has been prepared to identify potential high risk environmental emergencies and provide procedures for the response to environmental emergencies

- Hazard and Risk Management Plan (HRMP)
  - Identifies potential environmental hazards and risk associated with construction activities that may lead to emergencies and/or incidents.

- Site Specific Emergency Spill Plan (SSEmSP)
  - Identifies procedures and management measures that Abergeldie will implement to prevent and manage a spill.
- Emergency Response Process as a part of the Incident Management Plan.
  - This process addresses all identified potential high risk environmental emergencies. The Incident Management Plan will be updated in response to audit finding and reviews or when there are significant changes to activities or in response to revised and new risk assessments.
  - Emergency response procedures will be frequently tested at an interval of no more than six monthly.
- Flood Management Plan (FMP)
  - Outlines the procedures for managing floods across the Project site.
- Bushfire emergency response procedure
  - Developed to outline the procedure for managing bushfires across the Project site.

There are various other actions that should be considered following a material harm pollution incident including:

- Pitt Town Bypass Project PIRMP (i.e. this Plan) should be reviewed and updated (if necessary).
- Assessing the best clean up procedures based on the pollutant and site issues.
- Remedial action – remove contaminated soil, wastewater and used spill equipment to an appropriate place within the licensed premises for licensed waste disposal and/or remediation.
- Undertake further monitoring / testing if required.
- Complete incident reporting forms (within three [3] days of incident).
- Organise restocking of spill equipment.
- Undertake an incident investigation.
- Implement corrective actions to avoid reoccurrence.

## 8. REVIEW AND IMPROVEMENT

### 8.1 CONTINUOUS IMPROVEMENT

Continuous improvement of this plan will be achieved by the ongoing evaluation of environmental management performance against environmental policies, objectives and targets for the purpose of identifying opportunities for improvement. The continuous improvement process will be designed to:

- Identify areas of opportunity for improvement of environmental management and performance.
- Determine the cause or causes of non-conformances and deficiencies.
- Develop and implement a plan of corrective and preventative action to address any non-conformances and deficiencies.
- Verify the effectiveness of the corrective and preventative actions.
- Document any changes in procedures resulting from process improvement.
- Make comparisons with objectives and targets.

### 8.2 PIRMP UPDATE AND AMENDMENT

A review of the PIRMP will occur in the following circumstances:

- Every 12 months. Note that contact details in this document must be kept current at all times.
- A review of the plan should be conducted if a training exercise proves the plan inadequate or improvements are recommended.
- Within one month of the date of any pollution incident that occurs in the course of an activity to which the EPL relates. This review will be undertaken in light of the incident, to determine if the information included in the plan is accurate and up to date and the plan is still capable of being implemented in a workable and effective manner.

The review of the PIRMP will include the following information:

- Date of the review;
- The name of the person who reviewed the plan; and
- A summary of changes made to the plan.

### 8.3 PIRMP AVAILABILITY

The necessary parts of this PIRMP are publicly available at: <https://abergeldie.com/projects/pitt-town-bypass>.

This includes:

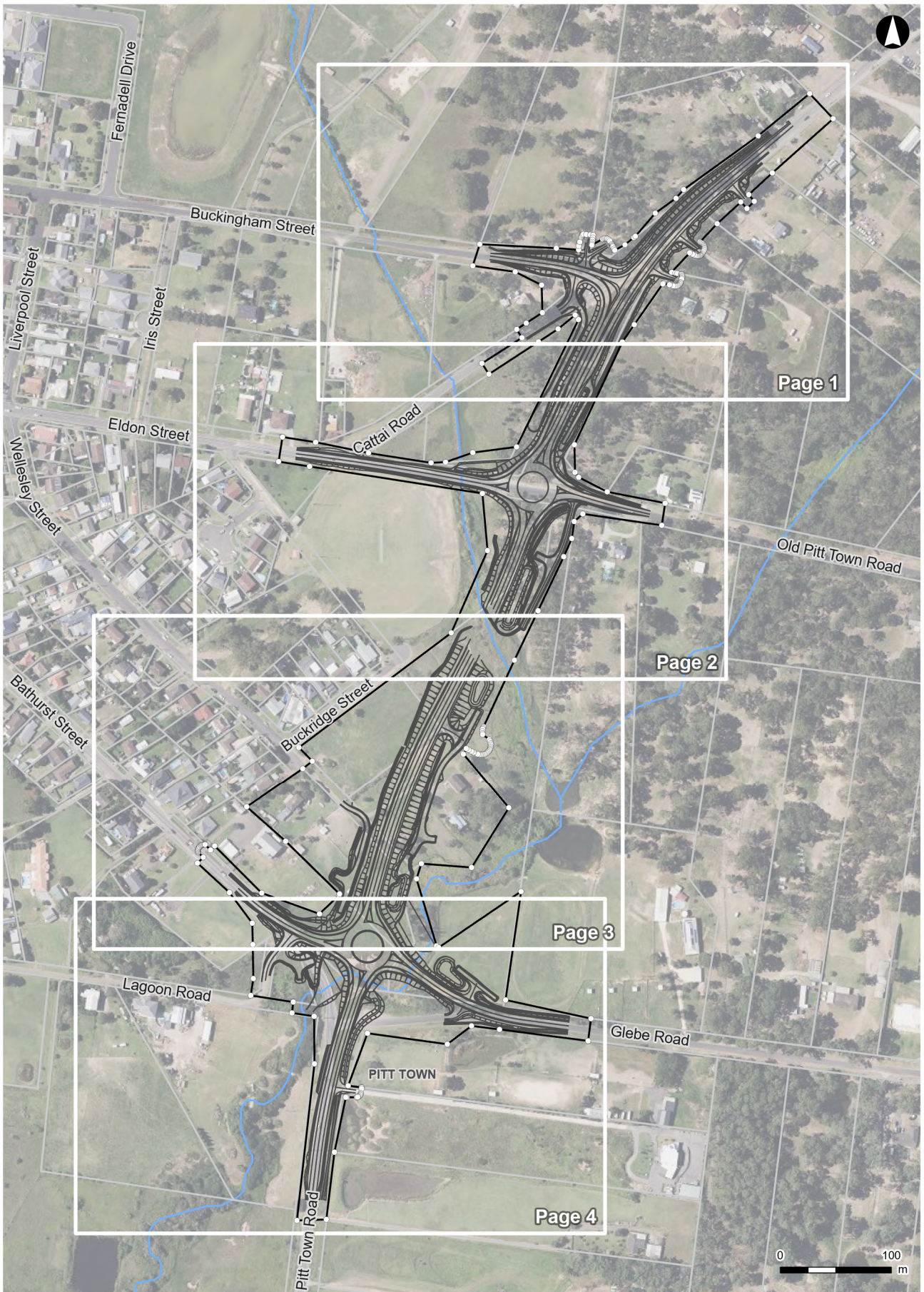
- The procedures for contacting the relevant authorities including the EPA, local council, NSW Ministry of Health, WorkCover NSW, and Fire and Rescue NSW
- The procedures for communicating with the community.

On completion of the annual testing and review process or following a test in response to an incident, Abergeldie will review and if necessary, amend the PIRMP and make the reviewed or amended version available on the Project website.

A hard copy of the PIRMP will be available at the site office and will be provided to all personnel responsible for implementing the PIRMP. The plan is to be provided to all sub-contractors and utilities on site.

The PIRMP will be made available to an EPA Authorised Officer on request.

## APPENDIX A – PREMISES MAPS



#### Legend

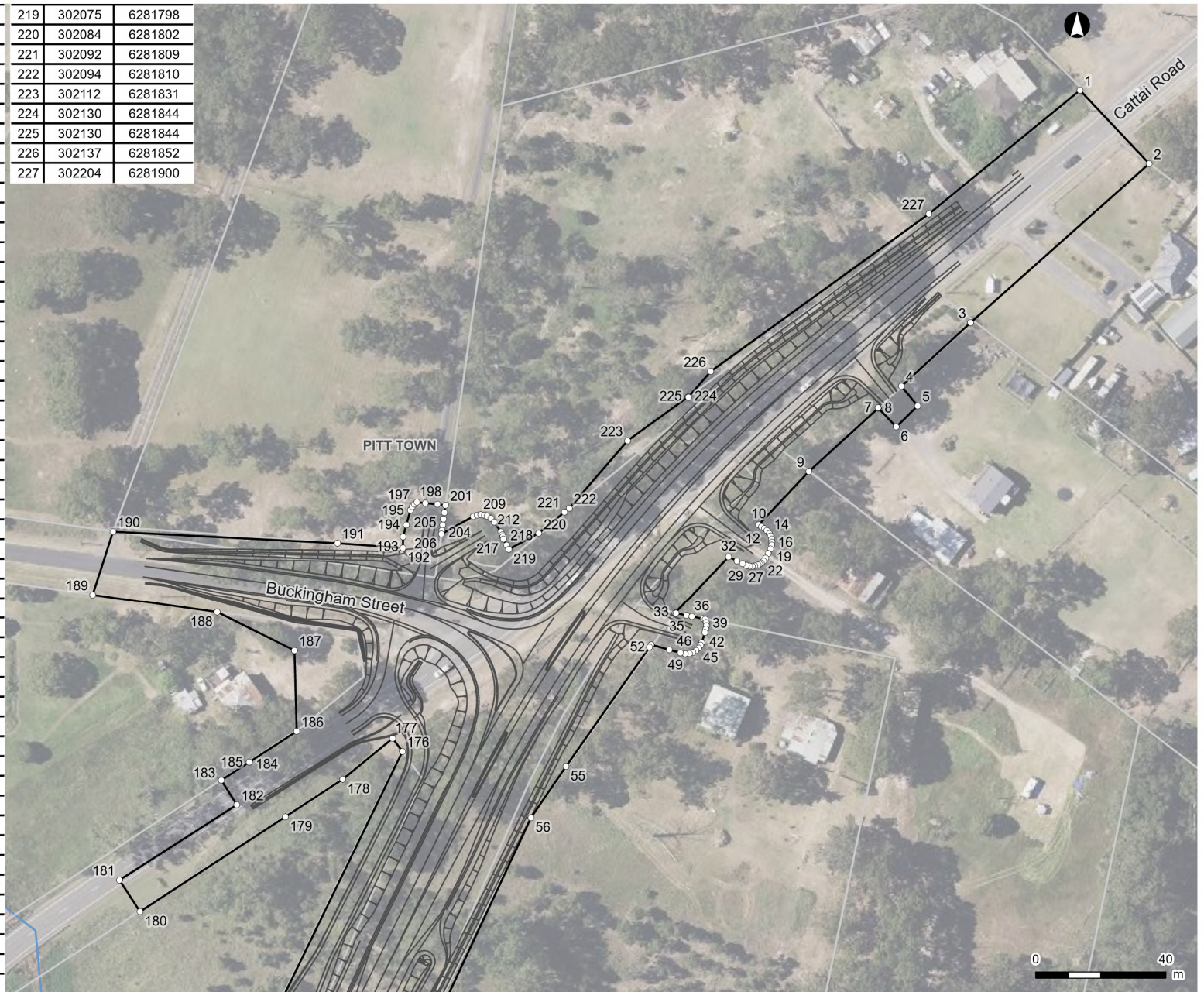
- EPL Premises Boundary
- Property boundaries
- Road design (100%)
- Watercourse

## Pitt Town Bypass Premise Map

1:4,860 at A4  
 Coordinate System: GDA2020 MGA Zone 56  
 Date issued: November 4, 2024  
 Imagery: DCS



ID	Easting	Northing	50	302128	6281765	219	302075	6281798
1	302251	6281938	51	302125	6281766	220	302084	6281802
2	302272	6281916	52	302119	6281768	221	302092	6281809
3	302217	6281867	53	302119	6281768	222	302094	6281810
4	302196	6281848	54	302118	6281767	223	302112	6281831
5	302201	6281842	55	302093	6281731	224	302130	6281844
6	302194	6281835	56	302082	6281715	225	302130	6281844
7	302189	6281841	176	302043	6281735	226	302137	6281852
8	302189	6281841	177	302040	6281739	227	302204	6281900
9	302167	6281821	178	302024	6281727			
10	302152	6281805	179	302007	6281715			
11	302153	6281804	180	301962	6281686			
12	302154	6281804	181	301956	6281696			
13	302155	6281803	182	301992	6281719			
14	302155	6281802	183	301987	6281726			
15	302156	6281802	184	301995	6281732			
16	302156	6281801	185	301995	6281732			
17	302156	6281800	186	302010	6281741			
18	302156	6281799	187	302009	6281766			
19	302156	6281798	188	301986	6281778			
20	302155	6281796	189	301947	6281783			
21	302154	6281795	190	301954	6281803			
22	302154	6281794	191	302023	6281799			
23	302153	6281793	192	302043	6281798			
24	302152	6281793	193	302043	6281801			
25	302152	6281793	194	302044	6281805			
26	302151	6281792	195	302045	6281810			
27	302150	6281792	196	302046	6281811			
28	302149	6281792	197	302046	6281811			
29	302148	6281793	198	302047	6281812			
30	302147	6281793	199	302050	6281812			
31	302145	6281794	200	302053	6281811			
32	302143	6281795	201	302056	6281811			
33	302126	6281778	202	302055	6281809			
34	302127	6281778	203	302055	6281807			
35	302130	6281777	204	302055	6281805			
36	302131	6281777	205	302055	6281803			
37	302135	6281776	206	302055	6281802			
38	302136	6281776	207	302064	6281808			
39	302136	6281775	208	302065	6281808			
40	302136	6281774	209	302067	6281808			
41	302136	6281773	210	302068	6281808			
42	302135	6281772	211	302069	6281808			
43	302135	6281769	212	302070	6281807			
44	302134	6281768	213	302071	6281806			
45	302134	6281767	214	302073	6281803			
46	302133	6281766	215	302073	6281802			
47	302132	6281766	216	302073	6281801			
48	302131	6281765	217	302074	6281801			
49	302129	6281765	218	302075	6281799			



#### Legend

EPL Premises Boundary
  Road design (100%)
  Property boundaries
 ~ Watercourse

#### Pitt Town Bypass Premise Map Page 1 of 4

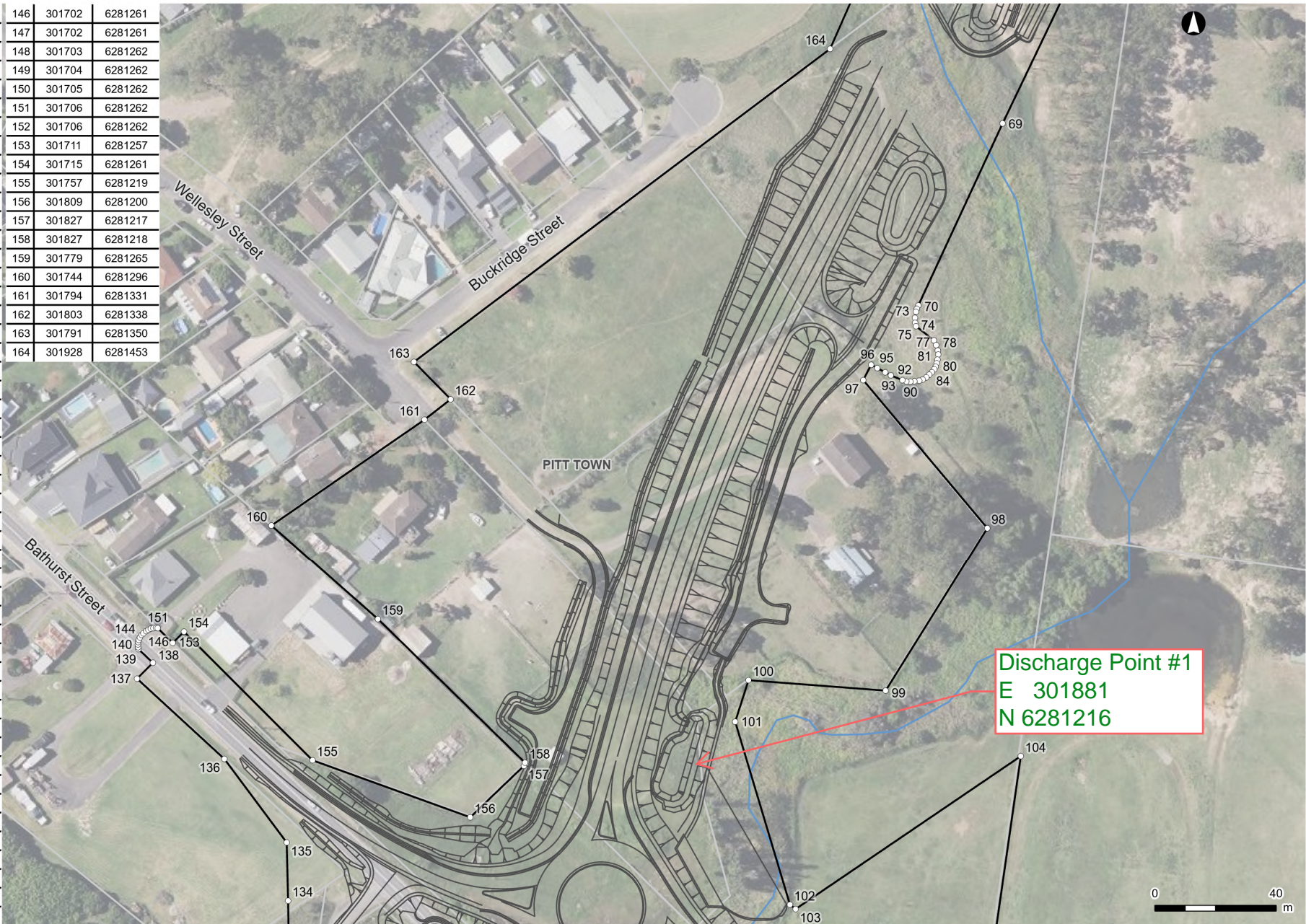
ID	Easting	Northing
57	302039	6281623
58	302039	6281598
59	302043	6281593
60	302068	6281580
61	302121	6281570
62	302118	6281550
63	302046	6281560
64	302039	6281554
65	302037	6281538
66	302037	6281538
67	302029	6281522
68	302006	6281473
69	301985	6281429
164	301928	6281453
165	301961	6281527
166	301956	6281579
167	301800	6281603
168	301773	6281607
169	301776	6281629
170	301806	6281625
171	301853	6281615
172	301910	6281606
173	301923	6281607
174	301947	6281615
175	301987	6281621
180	301962	6281686
181	301956	6281696



Legend

EPL Premises Boundary
  Road design (100%)
  Property boundaries
 ~ Watercourse

ID	Easting	Northing	146	301702	6281261
69	301985	6281429	147	301702	6281261
70	301957	6281369	148	301703	6281262
71	301957	6281368	149	301704	6281262
72	301956	6281367	150	301705	6281262
73	301956	6281365	151	301706	6281262
74	301956	6281363	152	301706	6281262
75	301956	6281362	153	301711	6281257
76	301962	6281357	154	301715	6281261
77	301963	6281356	155	301757	6281219
78	301963	6281354	156	301809	6281200
79	301964	6281353	157	301827	6281217
80	301963	6281351	158	301827	6281218
81	301963	6281350	159	301779	6281265
82	301963	6281349	160	301744	6281296
83	301962	6281348	161	301794	6281331
84	301962	6281347	162	301803	6281338
85	301961	6281346	163	301791	6281350
86	301960	6281345	164	301928	6281453
87	301959	6281344			
88	301957	6281344			
89	301956	6281344			
90	301954	6281344			
91	301953	6281344			
92	301952	6281344			
93	301948	6281346			
94	301946	6281347			
95	301944	6281348			
96	301942	6281349			
97	301939	6281344			
98	301980	6281295			
99	301946	6281242			
100	301901	6281245			
101	301897	6281231			
102	301915	6281171			
103	301917	6281170			
104	301991	6281220			
134	301749	6281172			
135	301749	6281192			
136	301728	6281219			
137	301699	6281246			
138	301705	6281251			
139	301700	6281255			
140	301700	6281256			
141	301700	6281257			
142	301700	6281258			
143	301700	6281258			
144	301700	6281259			
145	301701	6281260			



Discharge Point #1  
E 301881  
N 6281216

Legend

- EPL Premises Boundary
- Road design (100%)
- Property boundaries
- Watercourse

ID	Easting	Northing
102	301915	6281171
103	301917	6281170
105	301977	6281122
106	302054	6281106
107	302051	6281086
108	301971	6281096
109	301946	6281099
110	301924	6281083
111	301853	6281093
112	301835	6281045
113	301847	6281044
114	301847	6281044
115	301847	6281043
116	301847	6281039
117	301846	6281038
118	301846	6281037
119	301845	6281036
120	301844	6281035
121	301844	6281035
122	301843	6281035
123	301834	6281035
124	301833	6281035
125	301823	6280986
126	301815	6280925
127	301789	6280924
128	301804.8	6281065
129	301804	6281108
130	301785	6281111
131	301786	6281121
132	301747	6281127
133	301750	6281142
134	301749	6281172
135	301749	6281192
156	301809	6281200



#### Legend

EPL Premises Boundary
  Road design (100%)
  Property boundaries
 ~ Watercourse

#### Pitt Town Bypass Premise Map Page 4 of 4

1:1,800 at A4  
 Coordinate System: GDA2020 MGA Zone 56  
 Date issued: November 4, 2024  
 Imagery: DCS



Path: C:\Users\temaz4669\ARCADIS\Easing Sydney Congestion - H-GIS (2)\IB\_Workshop\2024\20241001\_Boundary\_Coords\ESCPBPP\_Coords.aprx

## Consolidated list of point locations

## Pitt Town Bypass Premise Map

Point ID	Easting	Northing		Point ID	Easting	Northing		Point ID	Easting	Northing
1	302250.8	6281938		44	302134.2	6281768		87	301958.5	6281344
2	302272	6281916		45	302133.6	6281767		88	301957.4	6281344
3	302217.1	6281867		46	302132.7	6281766		89	301955.8	6281344
4	302195.9	6281848		47	302131.8	6281766		90	301954.5	6281344
5	302200.9	6281842		48	302130.7	6281765		91	301953.1	6281344
6	302194.3	6281835		49	302129.4	6281765		92	301951.8	6281344
7	302188.8	6281841		50	302128	6281765		93	301948	6281346
8	302188.7	6281841		51	302124.6	6281766		94	301946.2	6281347
9	302167.4	6281821		52	302119	6281768		95	301943.5	6281348
10	302152	6281805		53	302119	6281768		96	301941.5	6281349
11	302152.9	6281804		54	302118.5	6281767		97	301938.9	6281344
12	302153.8	6281804		55	302092.8	6281731		98	301979.8	6281295
13	302154.5	6281803		56	302082.1	6281715		99	301946.3	6281242
14	302155.3	6281802		57	302038.9	6281623		100	301901.1	6281245
15	302155.7	6281802		58	302039.4	6281598		101	301896.7	6281231
16	302156	6281801		59	302042.7	6281593		102	301914.7	6281171
17	302156.1	6281800		60	302068.5	6281580		103	301916.6	6281170
18	302156	6281799		61	302120.6	6281570		104	301990.9	6281220
19	302155.7	6281798		62	302117.6	6281550		105	301976.9	6281122
20	302154.9	6281796		63	302046.4	6281560		106	302053.8	6281106
21	302154.2	6281795		64	302038.7	6281554		107	302051.2	6281086
22	302153.5	6281794		65	302036.5	6281538		108	301971.4	6281096
23	302152.8	6281793		66	302036.5	6281538		109	301946.2	6281099
24	302152.3	6281793		67	302029.3	6281522		110	301924.5	6281083
25	302151.9	6281793		68	302006.2	6281473		111	301852.5	6281093
26	302150.8	6281792		69	301984.9	6281429		112	301835.2	6281045
27	302150.1	6281792		70	301957.1	6281369		113	301847.3	6281044
28	302149.2	6281792		71	301956.6	6281368		114	301847.3	6281044
29	302148.2	6281793		72	301956.3	6281367		115	301847.3	6281043
30	302147.1	6281793		73	301956	6281365		116	301846.6	6281039
31	302145.3	6281794		74	301956	6281363		117	301846.3	6281038
32	302142.8	6281795		75	301956.3	6281362		118	301845.8	6281037
33	302126.3	6281778		76	301962.2	6281357		119	301844.9	6281036
34	302126.6	6281778		77	301962.9	6281356		120	301844.1	6281035
35	302129.8	6281777		78	301963.5	6281354		121	301843.6	6281035
36	302131.5	6281777		79	301963.6	6281353		122	301842.8	6281035
37	302135	6281776		80	301963.4	6281351		123	301833.9	6281035
38	302135.6	6281776		81	301963.1	6281350		124	301833	6281035
39	302135.9	6281775		82	301962.8	6281349		125	301822.8	6280986
40	302135.9	6281774		83	301962.3	6281348		126	301815.5	6280925
41	302135.8	6281773		84	301961.5	6281347		127	301789	6280924

# Pitt Town Bypass Premise Map

Point ID	Easting	Northing		Point ID	Easting	Northing		Point ID	Easting	Northing
42	302135.5	6281772		85	301960.7	6281346		128	301804.8	6281065
43	302134.5	6281769		86	301959.7	6281345		129	301804.5	6281108
130	301784.5	6281111		173	301922.9	6281607		188	301985.6	6281778
131	301785.7	6281121		174	301947.4	6281615		189	301947.4	6281783
132	301747.4	6281127		175	301986.8	6281621		190	301953.6	6281803
133	301749.7	6281142		176	302042.5	6281735		191	302022.6	6281799
134	301749.3	6281172		177	302039.5	6281739		192	302042.7	6281798
135	301748.8	6281192		178	302024.2	6281727		193	302042.8	6281801
136	301728.3	6281219		179	302006.5	6281715		194	302043.7	6281805
137	301699.4	6281246		180	301961.9	6281686		195	302045	6281810
138	301704.7	6281251		181	301955.6	6281696		196	302045.6	6281811
139	301699.9	6281255		182	301991.7	6281719		197	302046.2	6281811
140	301699.8	6281256		183	301986.9	6281726		198	302047	6281812
141	301699.7	6281257		184	301995.5	6281732		199	302049.6	6281812
142	301699.8	6281258		185	301995.5	6281732		200	302053.3	6281811
143	301700	6281258		186	302010.1	6281741		201	302055.8	6281811
144	301700.4	6281259		187	302009.4	6281766		202	302055.4	6281809
145	301701	6281260		188	301985.6	6281778		203	302055.2	6281807
146	301701.5	6281261		189	301947.4	6281783		204	302054.9	6281805
147	301702.5	6281261		190	301953.6	6281803		205	302054.7	6281803
148	301703.2	6281262		191	302022.6	6281799		206	302054.5	6281802
149	301704	6281262		192	302042.7	6281798		207	302064.3	6281808
150	301704.8	6281262		193	302042.8	6281801		208	302065.5	6281808
151	301705.7	6281262		194	302043.7	6281805		209	302066.6	6281808
152	301706.3	6281262		195	302045	6281810		210	302067.8	6281808
153	301711.2	6281257		196	302045.6	6281811		211	302068.6	6281808
154	301714.9	6281261		197	302046.2	6281811		212	302069.7	6281807
155	301757.3	6281219		198	302047	6281812		213	302070.8	6281806
156	301809.3	6281200		199	302049.6	6281812		214	302072.8	6281803
157	301827	6281217		200	302053.3	6281811		215	302073.3	6281802
158	301827.4	6281218		173	301922.9	6281607		216	302073.4	6281801
159	301778.9	6281265		174	301947.4	6281615		217	302073.6	6281801
160	301743.7	6281296		175	301986.8	6281621		218	302074.6	6281799
161	301794.2	6281331		176	302042.5	6281735		219	302075.3	6281798
162	301802.9	6281338		177	302039.5	6281739		220	302084.4	6281802
163	301790.8	6281350		178	302024.2	6281727		221	302092.3	6281809
164	301928	6281453		179	302006.5	6281715		222	302093.8	6281810
165	301960.6	6281527		180	301961.9	6281686		223	302111.7	6281831
166	301956	6281579		181	301955.6	6281696		224	302130.3	6281844
167	301800.4	6281603		182	301991.7	6281719		225	302130.4	6281844
168	301772.5	6281607		183	301986.9	6281726		226	302137.3	6281852
169	301776	6281629		184	301995.5	6281732		227	302204.3	6281900
170	301805.8	6281625		185	301995.5	6281732				

Pitt Town Bypass Premise Map

Point ID	Easting	Northing		Point ID	Easting	Northing		Point ID	Easting	Northing
171	301853.5	6281615		186	302010.1	6281741				
172	301909.8	6281606		187	302009.4	6281766				

## APPENDIX B – SITE COMPOUND LAYOUT

## APPENDIX B2 – SITE COMPOUND EMERGENCY ASSEMBLY POINT MAP (MAIN WORKS)



### WORKING HOURS

Monday to Friday – 7am to 5pm  
Saturday – 7am to 1pm  
No work on Sunday's or Public Holidays

### NOISE

High noise activities to be limited where possible and nearby residential noise receptors will be marked on this plan.

### OUT OF HOURS WORK

Unless otherwise approved no work outside the allowable hours is permitted.

### SITE INDUCTION

All personnel are required to undergo basic environmental training contained within the [site specific](#) induction.

### EARTHWORKS CONTROLS

- All vegetated areas will remain undisturbed as long as possible.
- Generally, all stockpiles will be covered when not for immediate use or extended periods. Silt fencing around stockpiles will be constructed as per plans.
- All disturbed areas will be fenced off and have sediment controls at the end of each shift.
- Entry and exit points will be stabilised where possible to minimise dirt/mud tracking onto roadways.
- All environmental controls will be installed as per the "Blue Book"
- All excavated material shall be classified prior to disposal off site.
- Contaminated materials will be marked on this plan and procedure in CEMP followed for testing and disposal of waste.

### PEDESTRIAN / TRAFFIC CONTROL

- All traffic control will be deployed as per the approved TMP for the site.
- All pedestrian traffic will be moved to clearly marked routes with approved way-finding signage.
- All traffic control will be implemented by a specialist contractor.

### BOUNDARY / EXCLUSION ZONES

- All areas marked as exclusion/Boundary zones (incl. tree protection zones) shall be clearly marked on the above plans.

### COMMUNITY LIAISON

- All public/community complaints and enquires shall be directed to the <insert where complaints are to be directed>
- Public notification signs shall be placed on site boundary fences. The local community shall be notified 7 days prior to starting work.

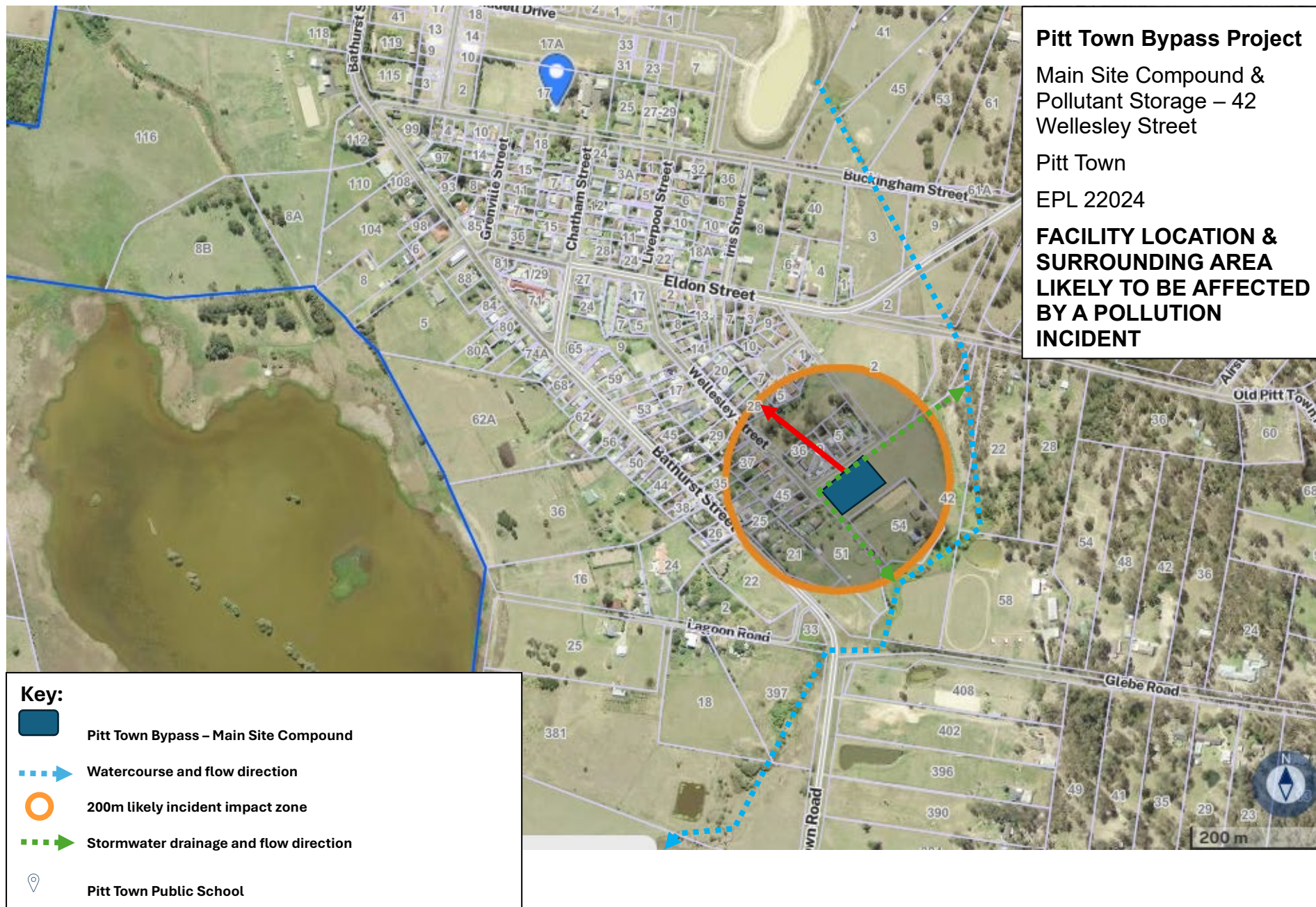
### TRAFFIC DEVICES/CONTROLS – As per TCP's No.



PROJECT START / FINISH: December 2022 – December 2025

THIS LAYOUT SHALL BE DISPLAYED IN A PROMINENT POSITION ON SITE FOR VIEWING BY ALL PERSONNEL

## APPENDIX C – POLLUTION EXTENT MAPPING



## APPENDIX D – ENVIRONMENTAL CONTACTS LIST

ENVIRONMENTAL CONTACT NAMES AND PHONE NUMBERS		
<b>Abergeldie Project Team</b>		
Position	Name	Phone Number
Senior Project Manager		
Site Superintendent		
Environmental Site Representative		
Environment & Sustainability Manager		
Community Relations Representative		
Construction Manager		
Safety Advisor		
Emergency Response Coordinator		
Main Office – Regents Park	-	02 8717 7777
Certified Professional in Erosion and Sediment Control		
Certified Professional in Erosion and Sediment Control - alternate		
Ecologist		
Excavation Director		
<b>TfNSW and Community Information Line 1800 840 280</b>		
Position	Name	Phone Number
TfNSW Project Manager		
TfNSW Environmental Manager		
24 Hour Community Information Line	-	1800 840 280
<b>Emergency Services</b>		
Organisation	Name	Phone Number
HAZMAT	Fire & Rescue	000 or 112 (from mobile phone)
Emergency Services	Ambulance, Police, Fire & Rescue	000 or 112 (from mobile phone)
Water Supplier – Water emergencies	Sydney Water	132090
Electricity Supplier - Electrical emergencies	Endeavour Energy	131 003
<b>Notifiable Environmental Incidents</b>		
Authority	Name	Phone Number
<u>Pollution Incidents (notifiable)</u>		
NSW EPA Pollution Line	-	131 555
NSW Ministry of Health	General phone number or Local Public Health Unit - Hawkesbury Public Health Unit	9391 9000 or 1300 066 055
NSW Fire and Rescue	-	000 (for an immediate threat to human health or property) 1300 729 579 (for pollution incidents that do not present an immediate threat to human health or property)

Local Council	Hawkesbury City Council	(02) 4560 4444
SafeWork NSW	-	131 050
<u>Other environmental incidents</u>		
Water NSW - if affecting Special and Controlled Areas	-	1800 061 069 (24 hrs)
Fisheries NSW		1300 550 474
Unexpected find of skeletal material	Police Assistance Line	131 444

*Note: This is not an exhaustive list. List should be maintained as current and updated at any time outside of the formal PIRMP review periods.*